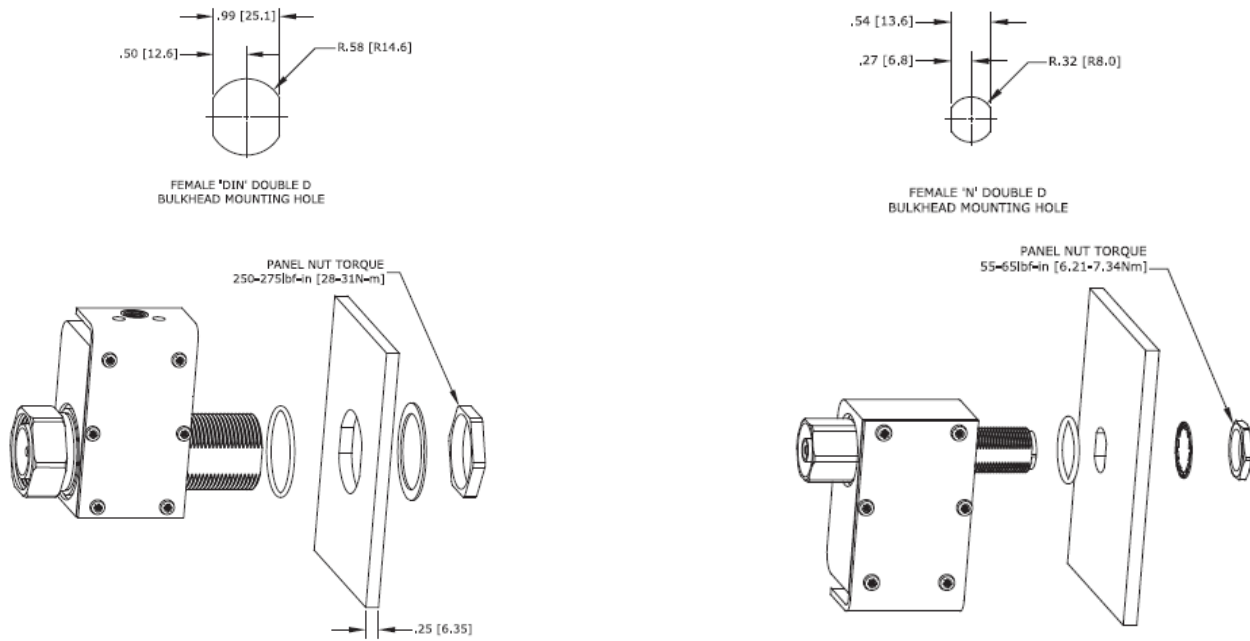


# GX, VHF, VUF Series Mounting & Grounding

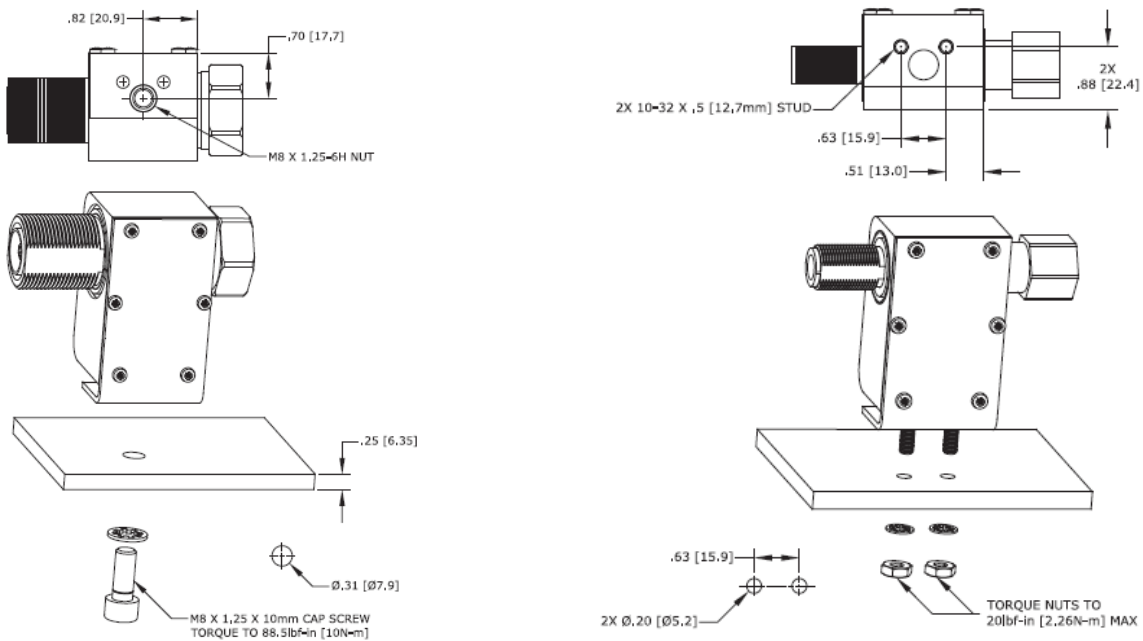
## TYPICAL BULKHEAD GROUNDING

Image #1



## TYPICAL FLANGE MOUNTING

Image #2



NOTE: O-Ring and other hardware are supplied with each unit.

Image #3 identifies the grounding kit for bulkhead installation (N connectors), with hardware description.  
The Part Number of this kit is 9100-0350, which can be purchased separately.

**Image #3**

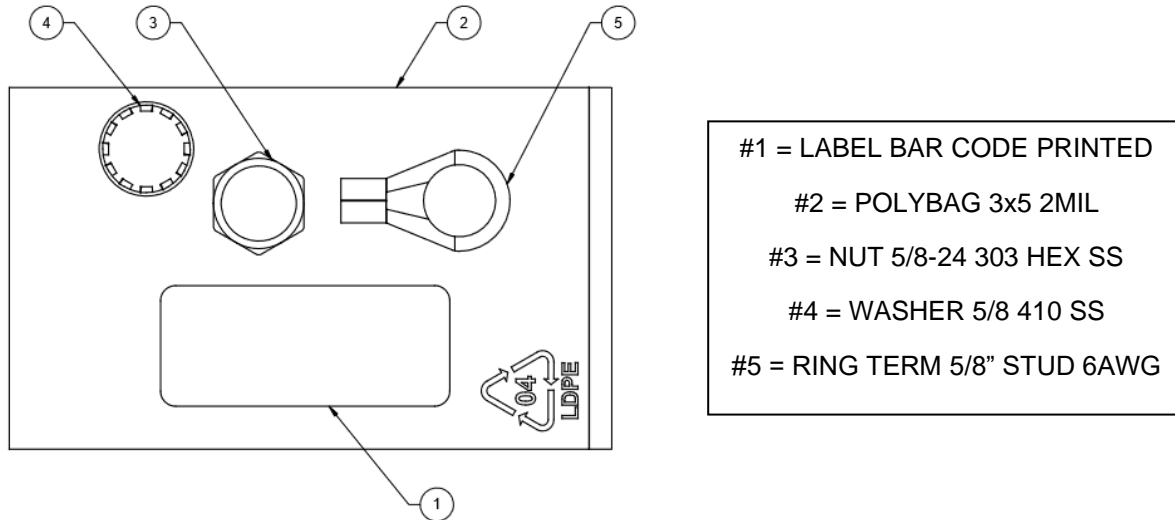


Image #4 shows the hardware kit (Part Number 9100-0522) that comes with the 4.3-10 TSX units for mounting and grounding.  
Typical kit used for bulkhead applications. Grounding accomplished with Ring Terminal and #6 AWG.

**Image #4**

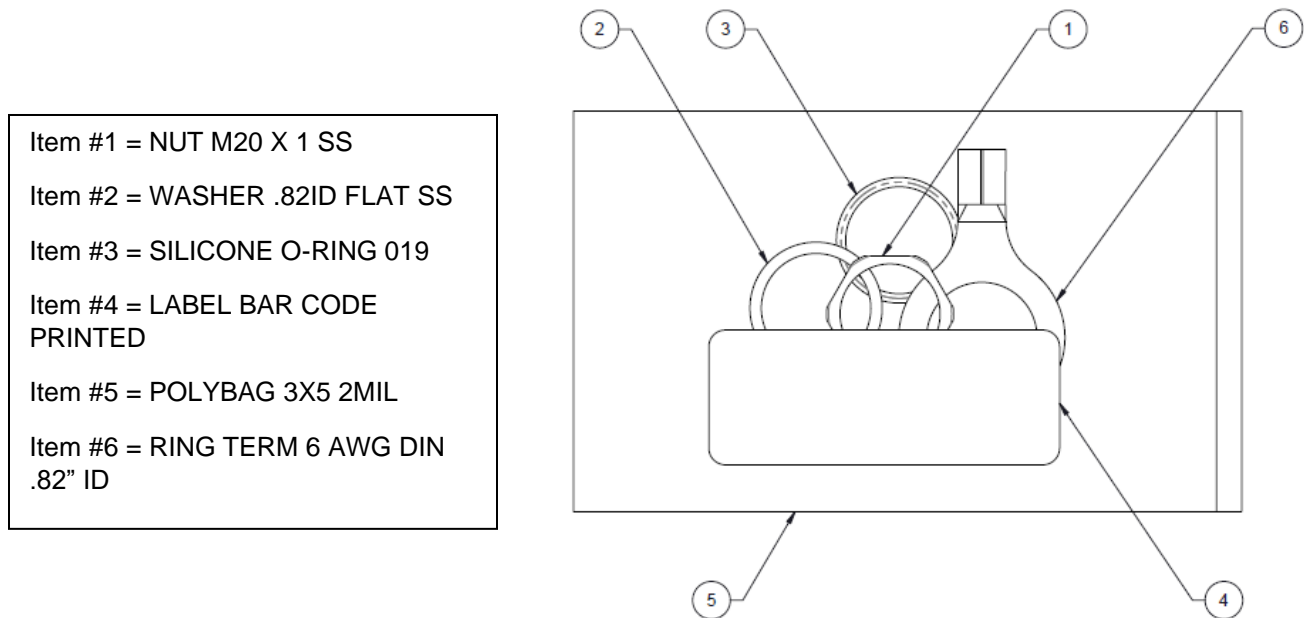
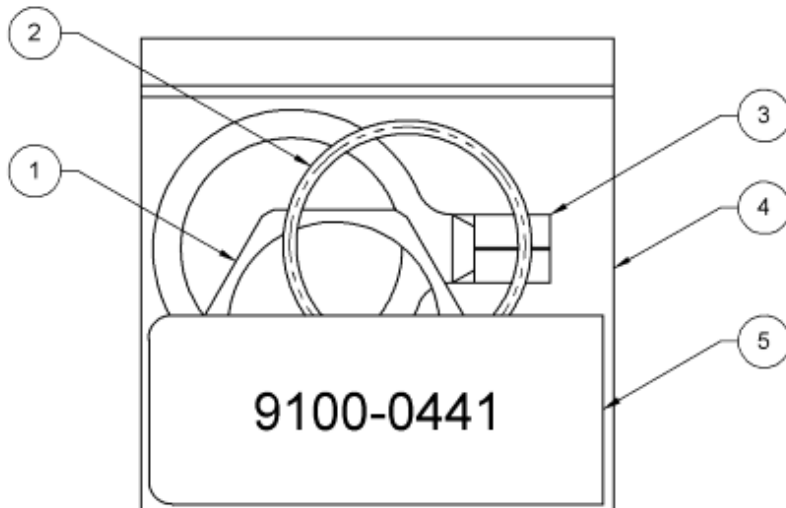
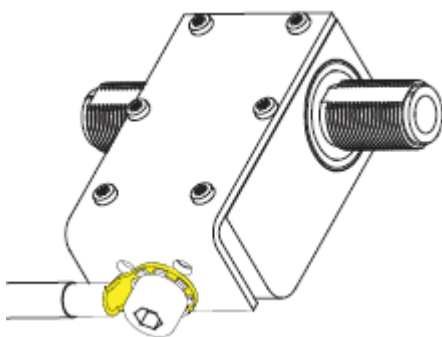


Image #5 shows the typical hardware kit (Part Number 9100-0441) that comes with the 7/16 DIN units.  
Grounding can be accomplished with the provided Ring Terminal and #6 AWG.

**Image #5**

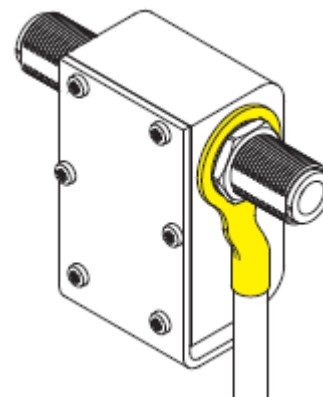


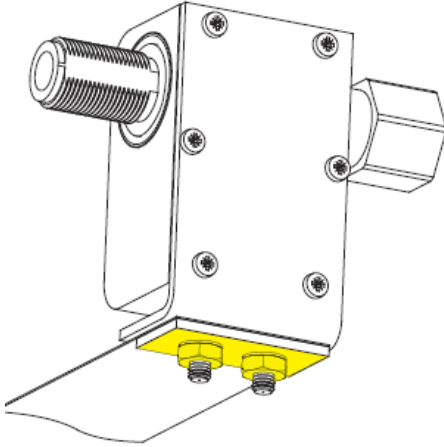
- Item #1 = NUT M29 X 1.5 SST DIN
- Item #2 = O-RING 025 SILICONE
- Item #3 = RING TERM 6AWG DIN 1.5"ID
- Item #4 = POLYBAG 2.5 X 2.5 IN 1.5 MIL ROLL
- Item #5 = LABEL BAR CODE PRINTED



The GX Series comes equipped with an integrated lid and mounting flange that can be used for grounding. The flange incorporates a captive 8mm PEM stud. In order to effectively ground this device we recommend using a 6 AWG ring terminal as shown. The ring terminal and wire are not included with the standard protector and could be purchased separately.

The GX Series device can also be grounded using an N or 7/16 DIN terminal lug as shown. Hardware for attaching a terminal lug as shown is included with the device. However, the terminal lug is not included and must be purchased separately.





Using a flat copper strap is also a good way to drain surge energy to the ground. When used in conjunction with a single point grounding system, such as the PEEP-M and PB-M grounded entry panels, the copper strap is especially effective in reducing surge currents to the equipment.

**WARNING - Do not connect** when a storm is near! **Do not connect** when transmissions are occurring! **Do not stay** in an area that has operating equipment in an electrical storm! The impulse suppressor may save the equipment from danger, but it cannot keep you or anyone else safe in the area!

*These commodities or technology are exported from the U.S. in accordance with the Export Administration Regulations. Diversion contrary to U.S. law prohibited.*